

Imaging Gold labelled specimens

Ideal settings for best contrast

When imaging specimens with Gold labelling, it can sometimes be difficult to get good contrast between the Gold and darker areas of the specimen, especially in areas with heavy staining. However, as the Gold is so dense, when compared to even the heaviest of stains, simple settings within DigitalMicrograph can make the task easy.

By right clicking into an image, the following IMAGE STATUS dialogue box can be selected. By changing the values of the REMOVE LOWEST and SURVEY to the values shown below, much better contrast will be seen. Press SAVE DEFAULTS and this will now be the settings used for future image collection, making the job much easier!

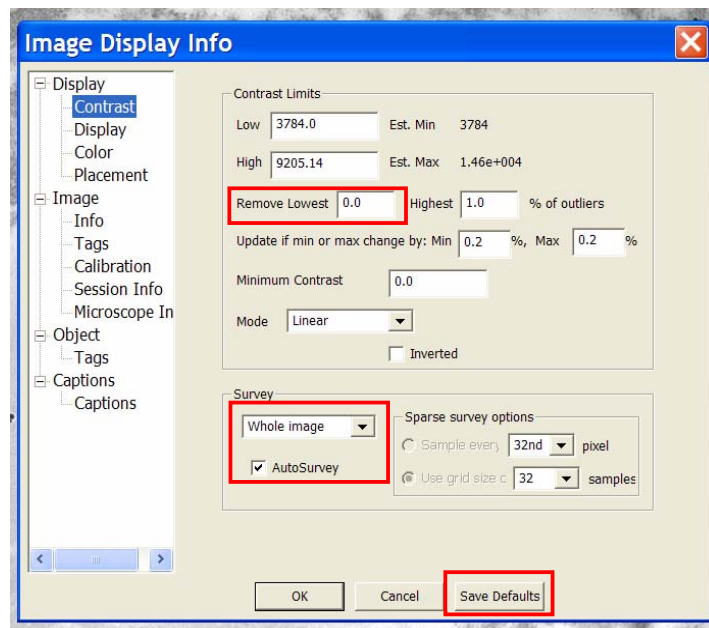
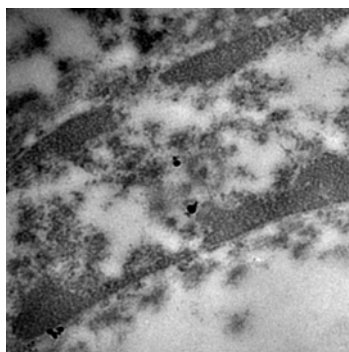


Image Status settings for best Gold Labelled Acquisition



Old settings example



New Settings